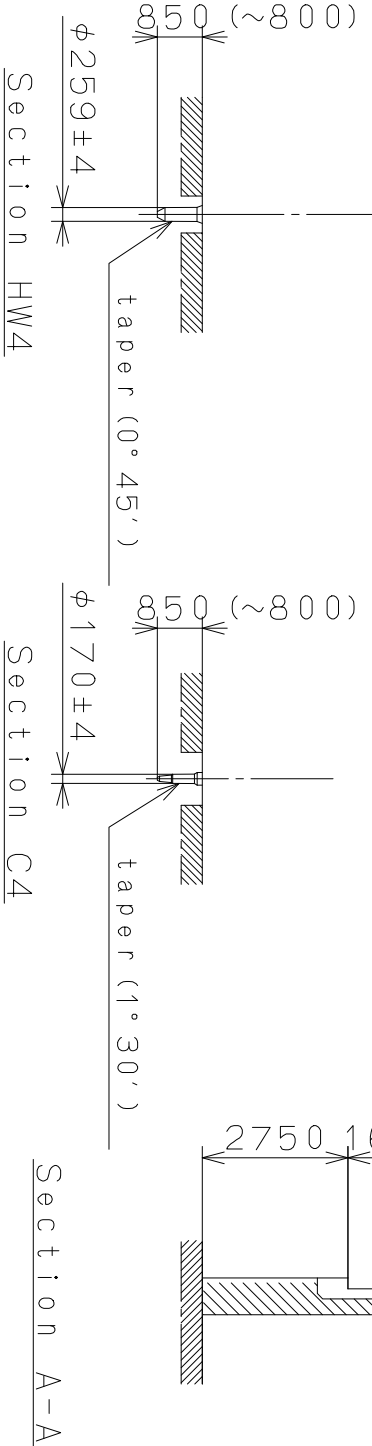
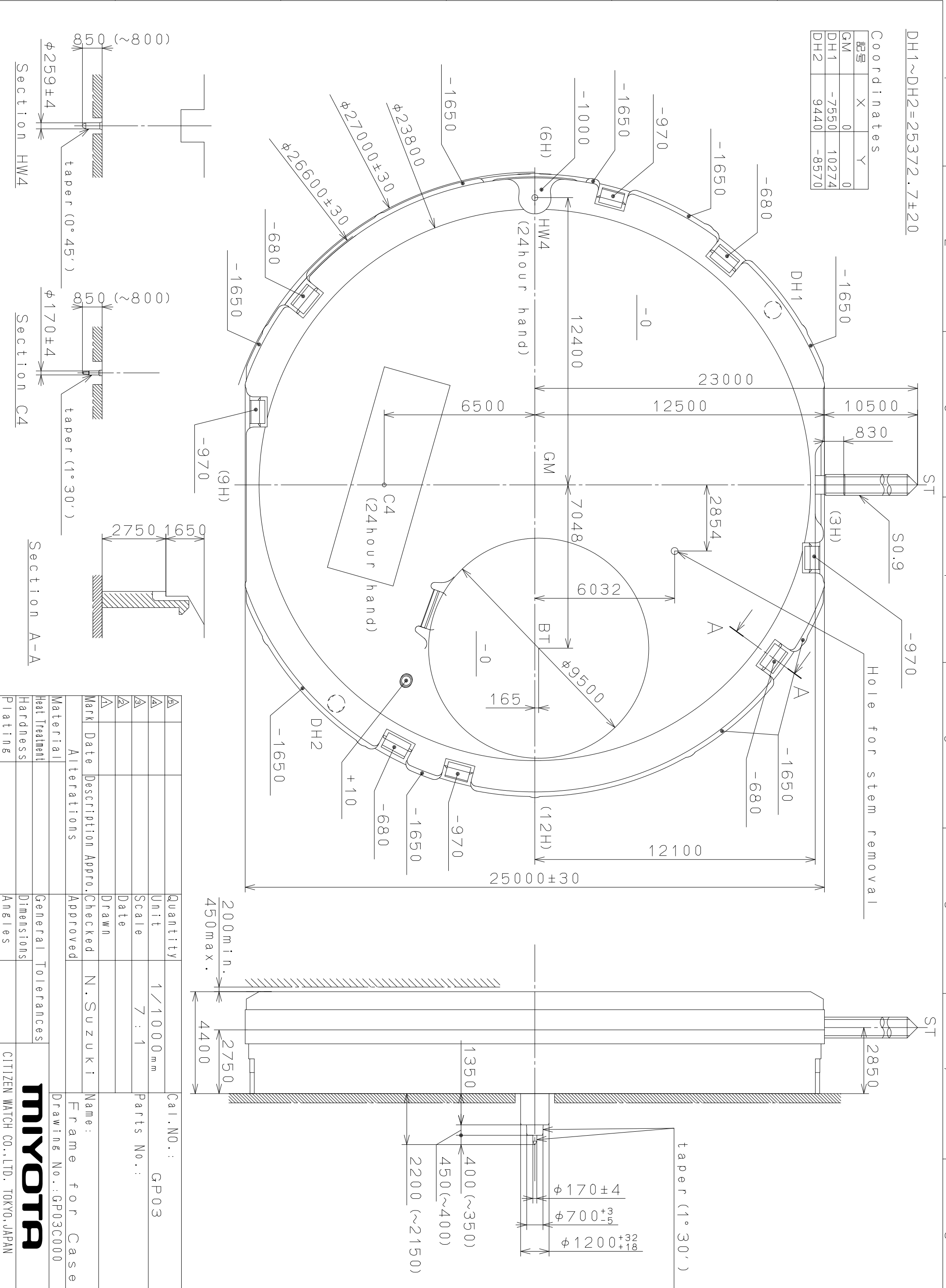


Coordinates

記号	X	Y
GM	0	0
DH1	-7550	10274
DH2	9440	-8570

DH1~DH2=25372.7±20



△	Quantity		Cal. NO.:	GP03
△	Unit	1/1000 mm	Parts No.:	
△	Scale	7:1	Name:	Frame for Case
△	Date		Drawing No.:	GP03C000
△	Date			
△	Drawn			
△	Checked	N. Suzuki		
△	Approved			
Material	Alterations			
Heat Treatment				
Hardness				
Plating				
	General Tolerances			
	Dimensions			
	Angles			

200min.  
450max.

2750  
4400

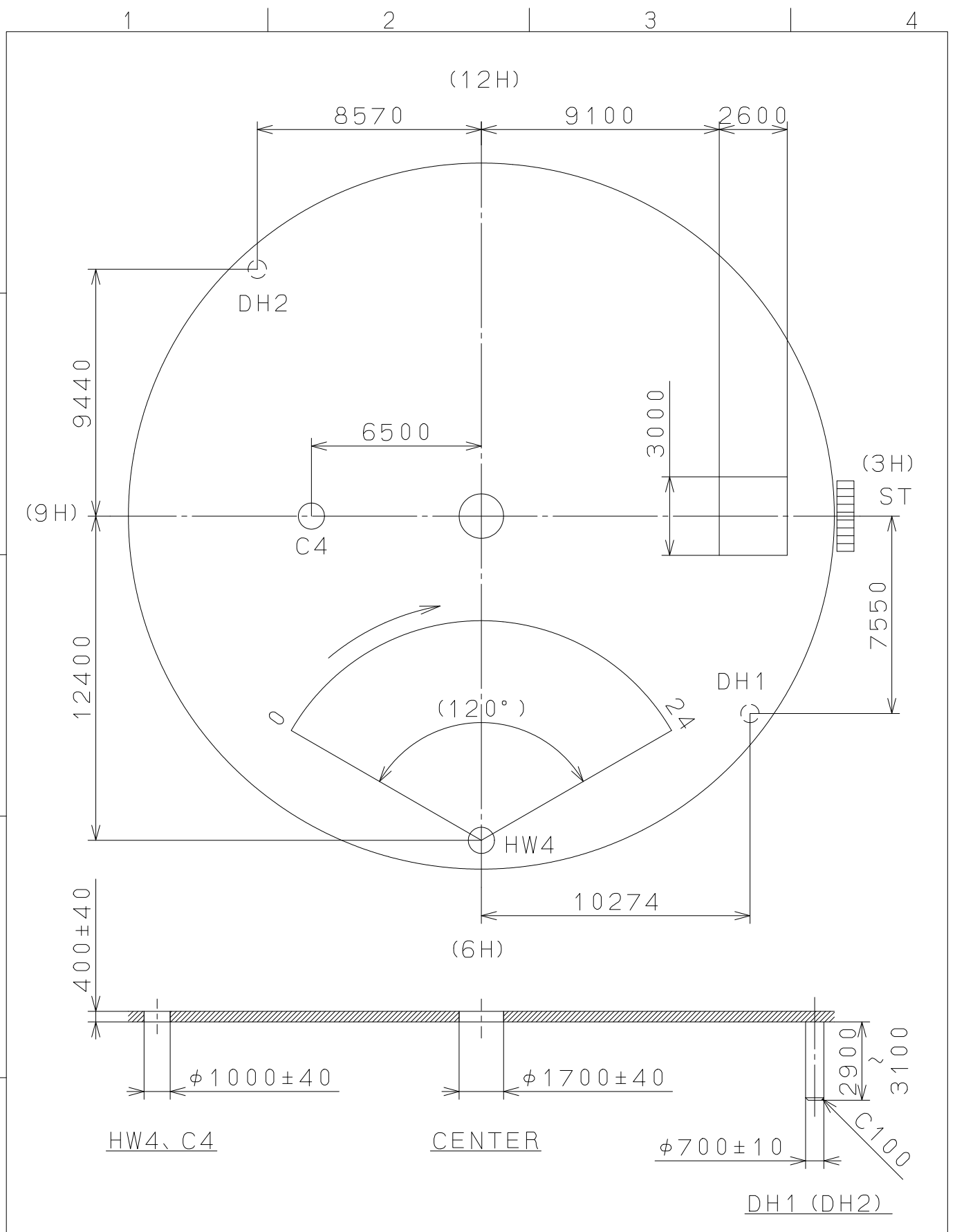
1350  
400 (~350)  
450 (~400)  
2200 (~2150)

taper (1°30')

φ170±4  
φ700<sup>+3</sup>/<sub>-5</sub>  
φ1200<sup>+32</sup>/<sub>-18</sub>

2009/05/07 (09:22:38)

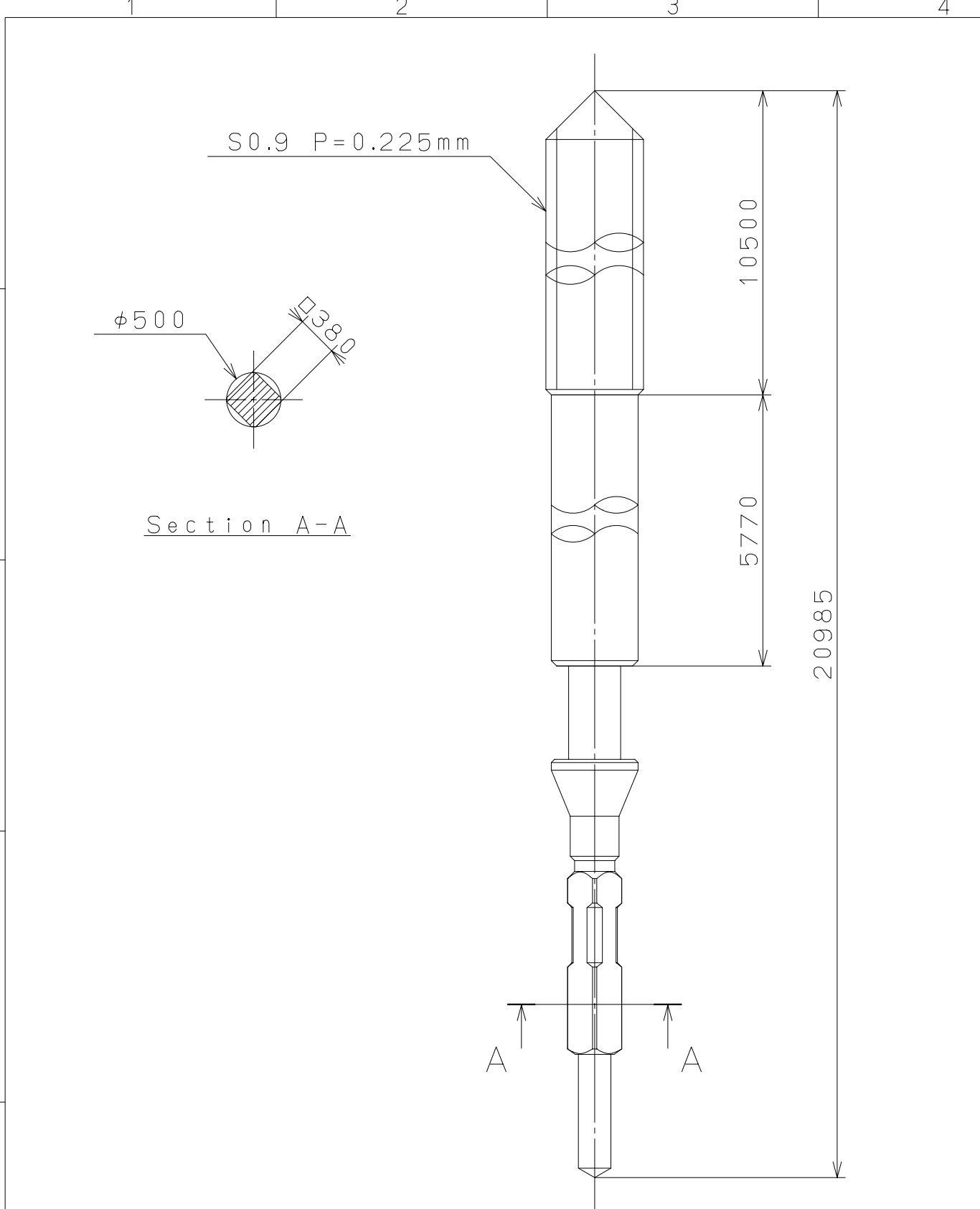
This drawing is provisional and subject to our reconfirmation and/or revision without notice.



△			Quantity		Cal.NO.:
△			Unit	1/1000 <sub>mm</sub>	GP03-00A
△			Scale	5:1	Parts No.:
△			Date		
△			Drawn		
Mark	Date	Description	Appr.	Checked	Name:
		Alterations	Approved	N. Suzuki	Indications for Dial
Material					Drawing No.: GP03D000
Heat Treatment			General Tolerances	<b>MIYOTA</b> CITIZEN WATCH CO., LTD. TOKYO, JAPAN	
Hardness			Dimensions		
Plating			Angles		

2005/02/01 (17:07:32)

This drawing is provisional and subject to our reconfirmation and/or revision without notice.



△			Quantity			Cal.NO.:
△			Unit	1 / 1000 mm		
△			Scale	20 / 1		Parts No.:
△				Date	Name	065-992
△			Drawn			
Mark	Date	Description	Appr.	Checked	M. Fukuda	Name:
Alterations			Approved	SETTING STEM		
Material						Drawing No.: 9920S000
Heat Treatment	General Tolerances					
Hardness	Dimensions					
Plating	Angles					CITIZEN WATCH CO., LTD. TOKYO, JAPAN